

Canon World Papercraft Mini-book

Buildings of the World Series Holland Windmill

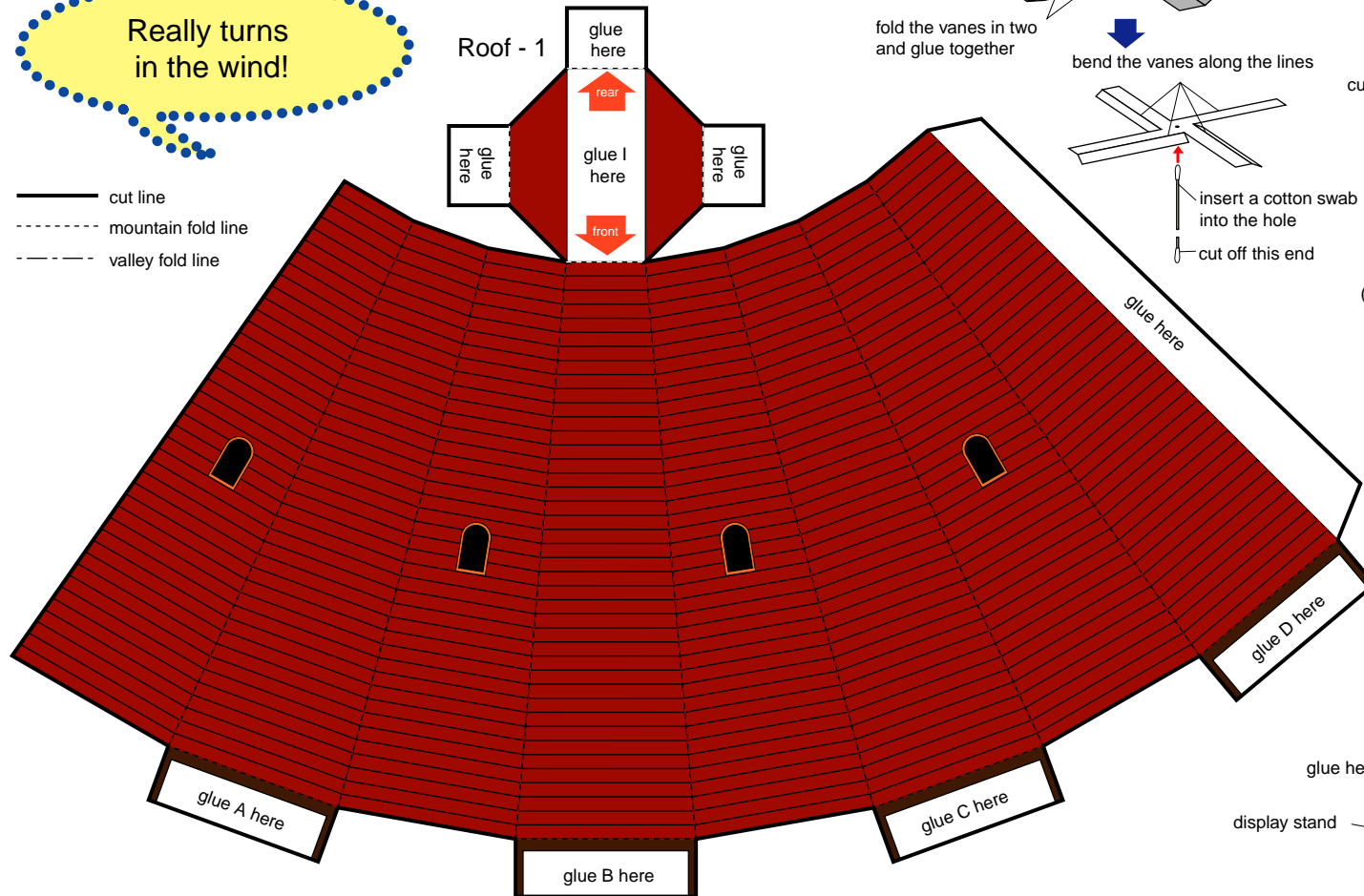
Windmills first appeared in Holland in the 1200s. They were used mainly to mill wheat into flour. Beginning in the 1400s they were also used for pumping water. Even today Holland is famous for its windmills. There are various types of windmills. This style is called the "grand sailor."



*Cut out the card above and save it. You can collect the cards from each of the Papercraft projects to make your own mini-book!



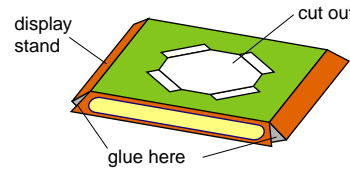
- cut line
- - - mountain fold line
- - - valley fold line



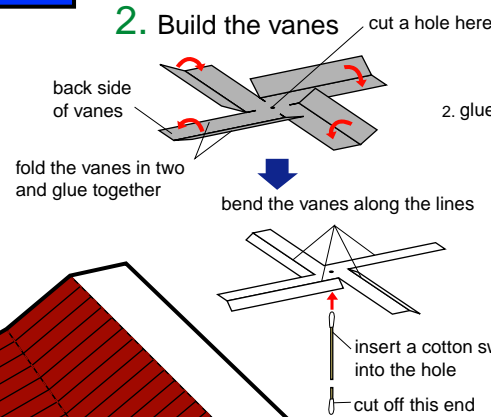
★ Directions * Items needed: Cotton swab, straw

Print out Page 1 and Page 2. Cut out all the parts, and fold along the mountain and valley fold lines.

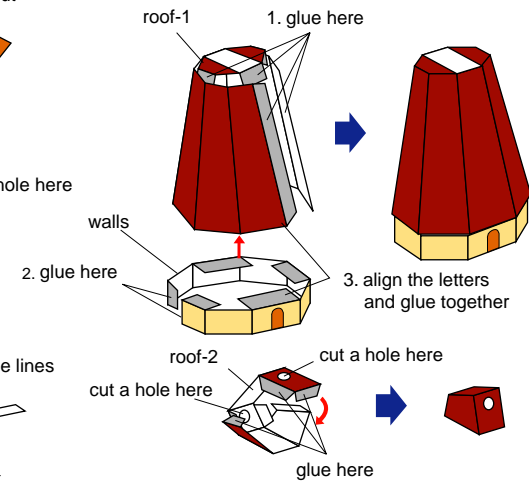
1. Build the display stand



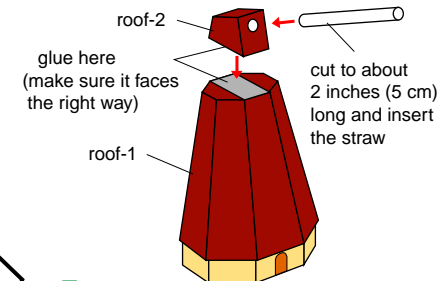
2. Build the vanes



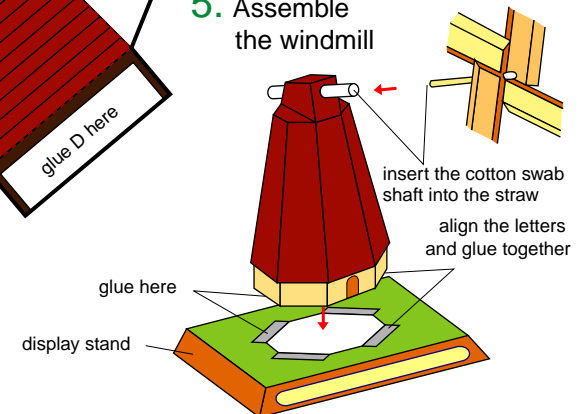
3. Build the roof

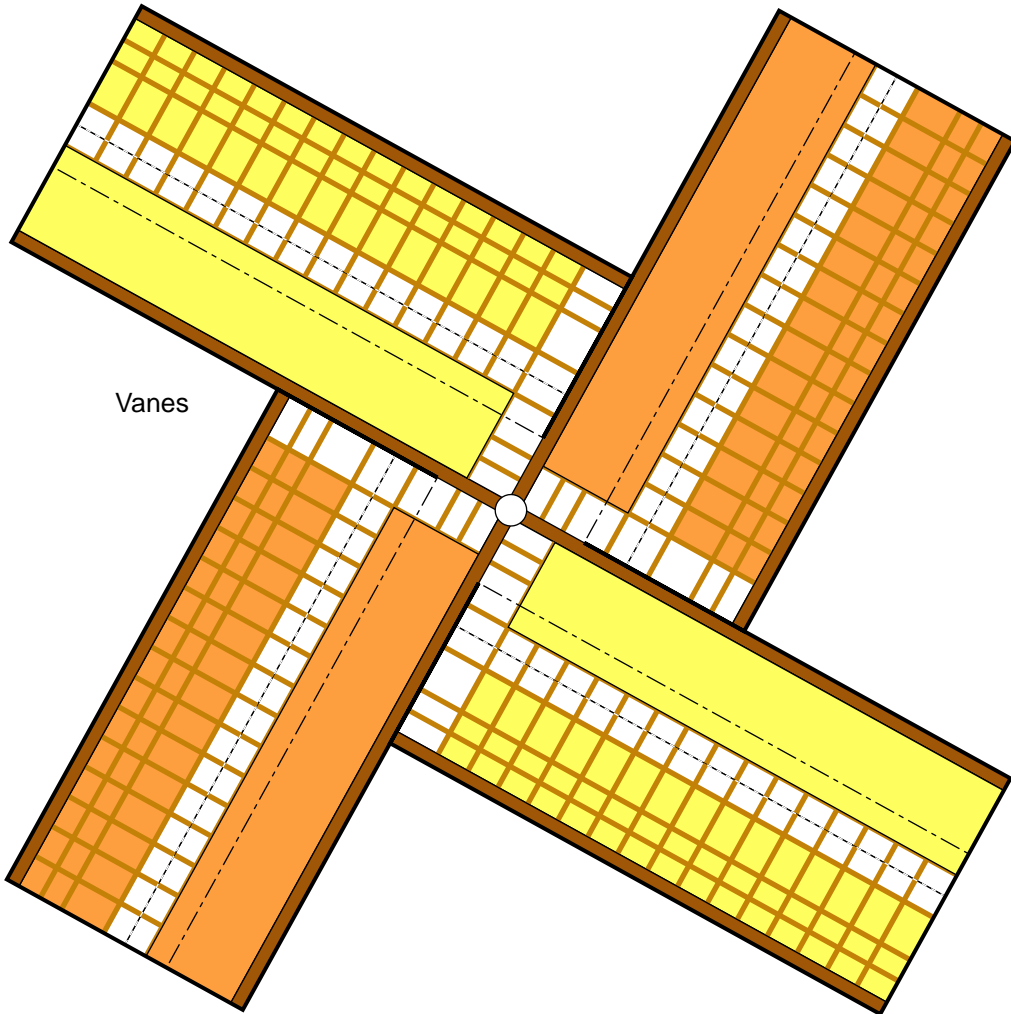


4. Assemble the base

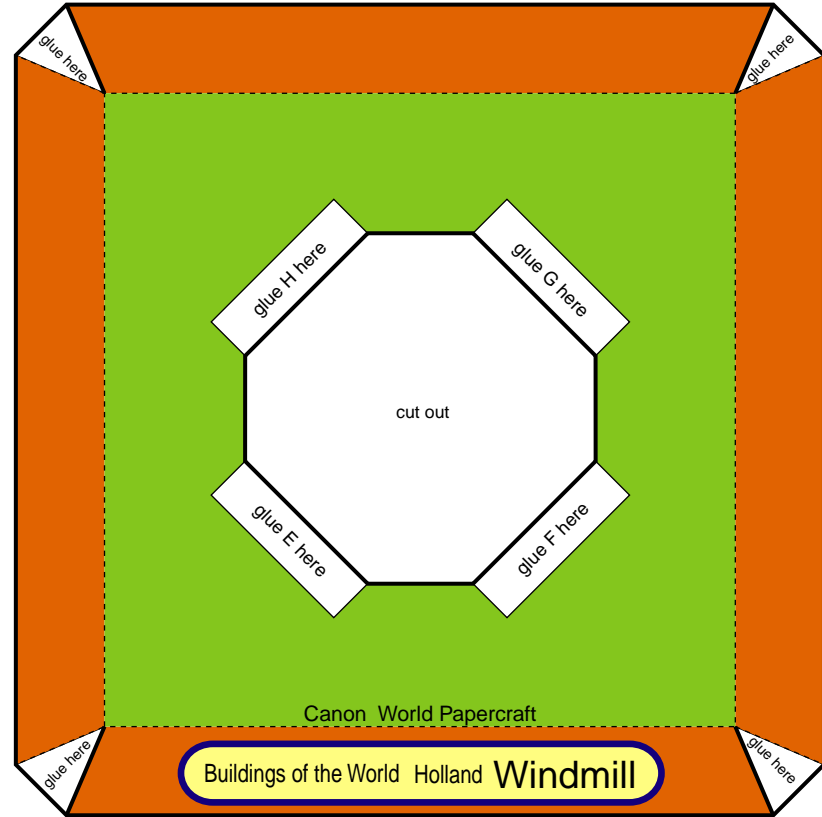


5. Assemble the windmill



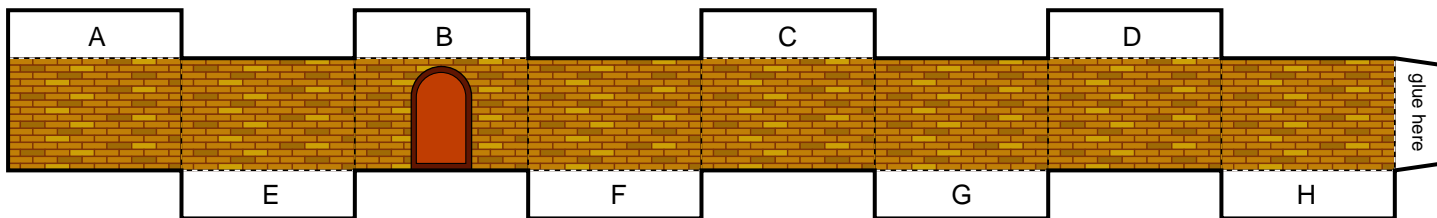


Display stand



— cut line
- - - mountain fold line
- - - valley fold line

Walls



Roof-2

